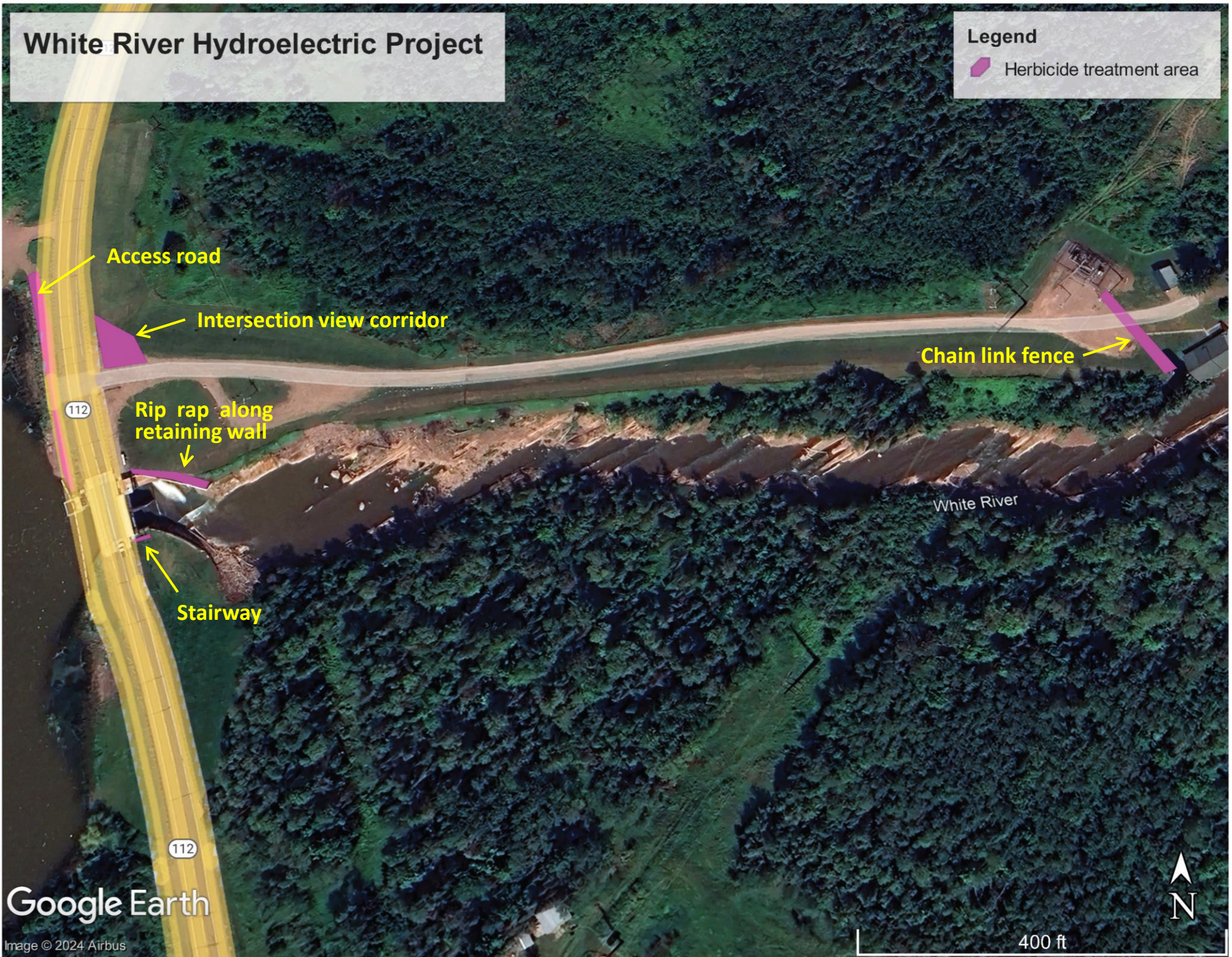


Appendix AIR-2
Herbicide Application Locations and
Herbicide Information

White River Hydroelectric Project

Legend
Herbicide treatment area



Access road

Intersection view corridor

112

Rip rap along retaining wall

Stairway

112

Chain link fence

White River

Google Earth

Image © 2024 Airbus



400 ft

List of Herbicide Products for Potential Use

Mix Number	Gallons/Acre	Products In Mix and Rates
1	BP	1 Pt Roundup Custom, 4 oz. Polaris AC, 4oz Milestone, 4oz MSO,
2	BP	1Pt Roundup Custom, 3oz Esplanade 200sc, 4oz Milestone, 4oz MSO/Mizer*
3	50	8 oz. Polaris AC, 7oz Milestone, 5oz Esplanade 200SC, 1pt Mizer/MSO
4	BP	16oz Vastlan, 16oz Escort Stock, 1.6oz Milestone, 4oz MSO
5	40	2qt Vastlan, 5oz Milestone, 1oz Escort, 1pt MSO
6	BP	16 oz. Roundup Custom, 3oz Esplanade 200 SC, 4oz MSO/Mizer
7	25	8 oz Polaris AC, 16 oz Roundup Custom, 3 oz Milestone, 16oz MSO
8	25	1 pt. Roundup Custom, 8 oz. Polaris AC, 4 oz Esplanade, 5 oz Milestone, 1 pt. MSO/Mizer

Herbicide Products

- **Polaris AC**
 - Label <http://www.cdms.net/ldat/ld9U0001.pdf>
 - SDS <http://www.cdms.net/ldat/mp9U0007.pdf>
- **Roundup Custom – Active Ingredient / Glyphosate**
 - Label <http://www.cdms.net/ldat/ld34B002.pdf>
 - SDS <http://www.cdms.net/ldat/mp34B003.pdf>
- **Vastlan – Active Ingredient / Triclopyr**
 - Label https://s3-us-west-1.amazonaws.com/agrian-cg-fs1-production/pdfs/Vastlan_Label1d.pdf
 - SDS <http://www.cdms.net/ldat/mpCU2005.pdf>
- **Milestone – Active Ingredient / Aminopyralid**
 - Label <http://www.cdms.net/ldat/ld77N015.pdf>
 - SDS <http://www.cdms.net/ldat/mp77N002.pdf>
- **TerraVue – Active Ingredient Aminopyralid/Florpyrauxifen-benzyl**
 - Label <http://www.cdms.net/ldat/ld2IB008.pdf>
 - SDS <http://www.cdms.net/ldat/mp2IB009.pdf>
- **Escort – Active Ingredient / Metsulfuron**
 - Label <http://www.cdms.net/ldat/ldCFM002.pdf>
 - SDS <http://www.cdms.net/ldat/mpCFM007.pdf>
- **Garlon 4 Ultra – Active Ingredient / Triclopyr**
 - Label <http://www.cdms.net/ldat/ld7IN007.pdf>
 - SDS <http://www.cdms.net/ldat/mp7IN012.pdf>
- **EsplAnade – Active Ingredient / Indaziflam**
 - Label <http://www.cdms.net/ldat/ldAB1004.pdf>
 - SDS <http://www.cdms.net/ldat/mpAB1009.pdf>

Adjuvants

- **Mizer**
 - Label <http://www.cdms.net/ldat/ld5L7003.pdf>
 - SDS <http://www.cdms.net/ldat/mp4PH001.pdf>
- **MSO**
 - Label <http://www.cdms.net/ldat/ld7UD000.pdf>
 - SDS <http://www.cdms.net/ldat/mp7UD009.pdf>
- **Reign**
 - Label <http://www.cdms.net/ldat/ld80A001.pdf>
 - SDS <http://www.cdms.net/ldat/mp80A006.pdf>